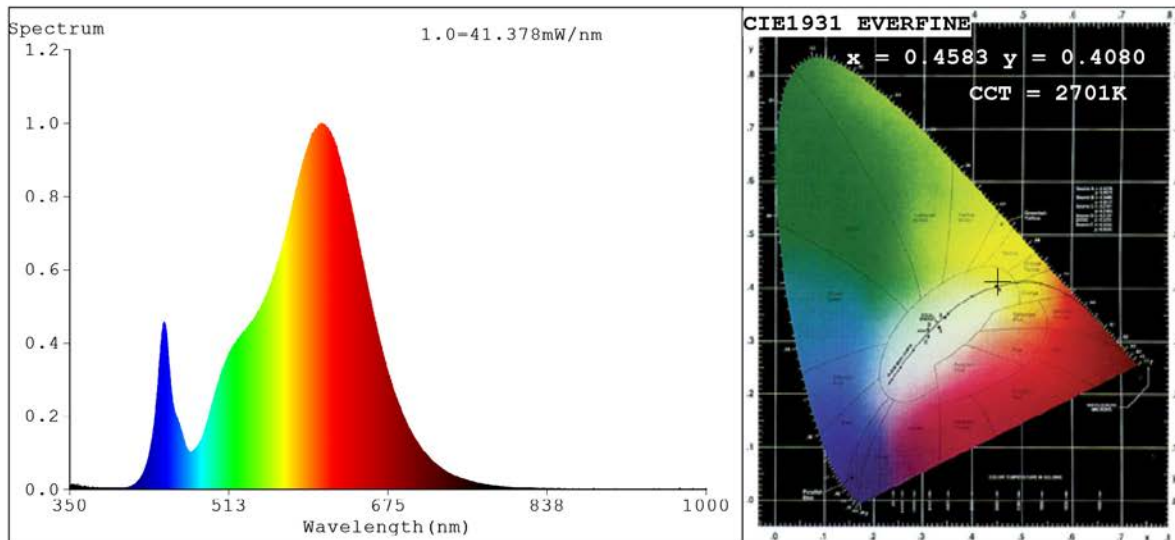


Spectrum Test Report



Color Parameters:

Chromaticity Coordinate: $x=0.4583$ $y=0.4080$ $u'=0.2627$ $v'=0.5261$
 CCT=2701K(Duv=-0.0008) Dominant WL:Ld =584.5nm Purity=60.0%
 Ratio:R=25.3% G=72.7% B=2.0%;;Peak WL:Lp=607.5nm FWHM=113.4nm
 Render Index:Ra=83.0 CRI=78.3 TM30:Rf=81 Rg=98
 R1 =82 R2 =91 R3 =97 R4 =82 R5 =82 R6 =90 R7 =82
 R8 =58 R9 =8 R10=81 R11=83 R12=78 R13=84 R14=99 R15=73

Photo Parameters:

Flux = 1861 lm Eff. : 128.08 lm/W Fe = 5.747 W

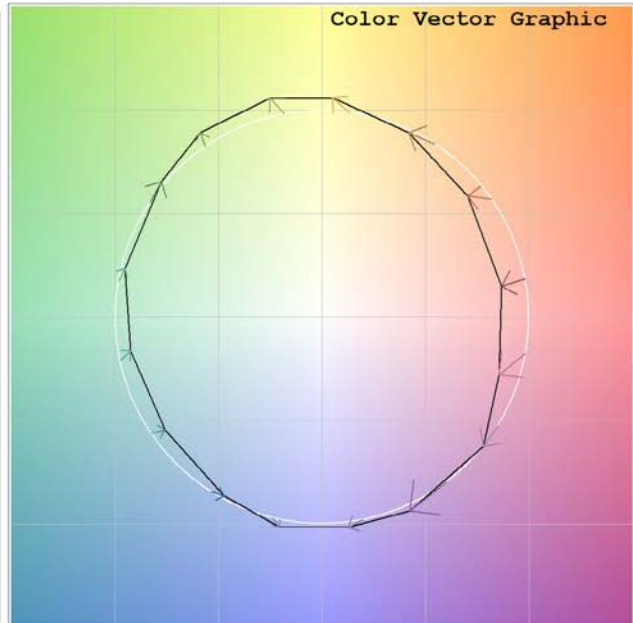
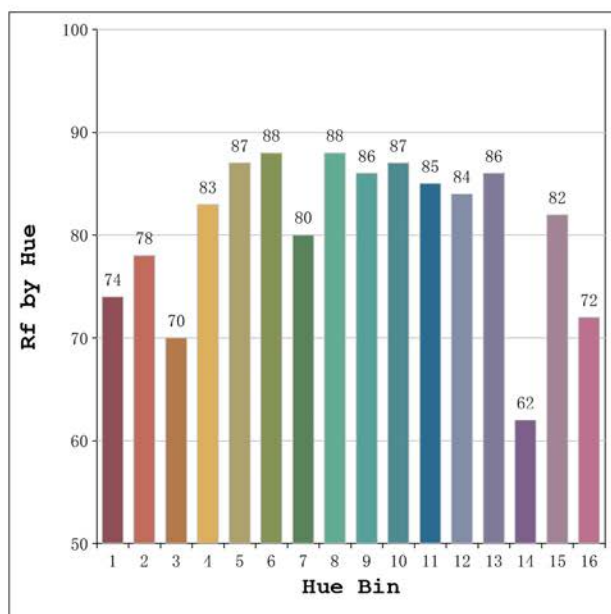
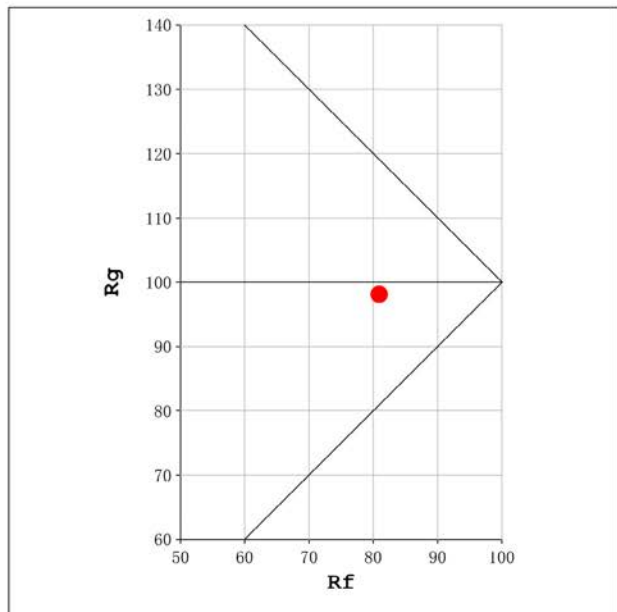
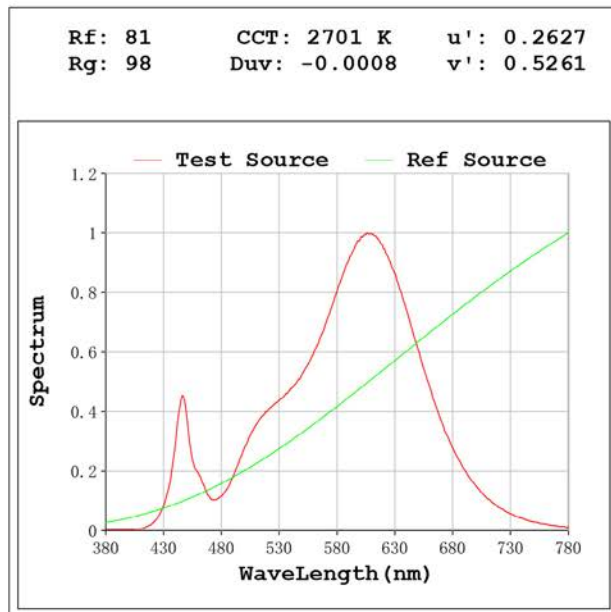
Electrical parameters:

V = 23.998 V I = 0.6056 A P = 14.53 W PF = 1.000

Status: Integral T = 616 ms Ip = 49966 (76%)

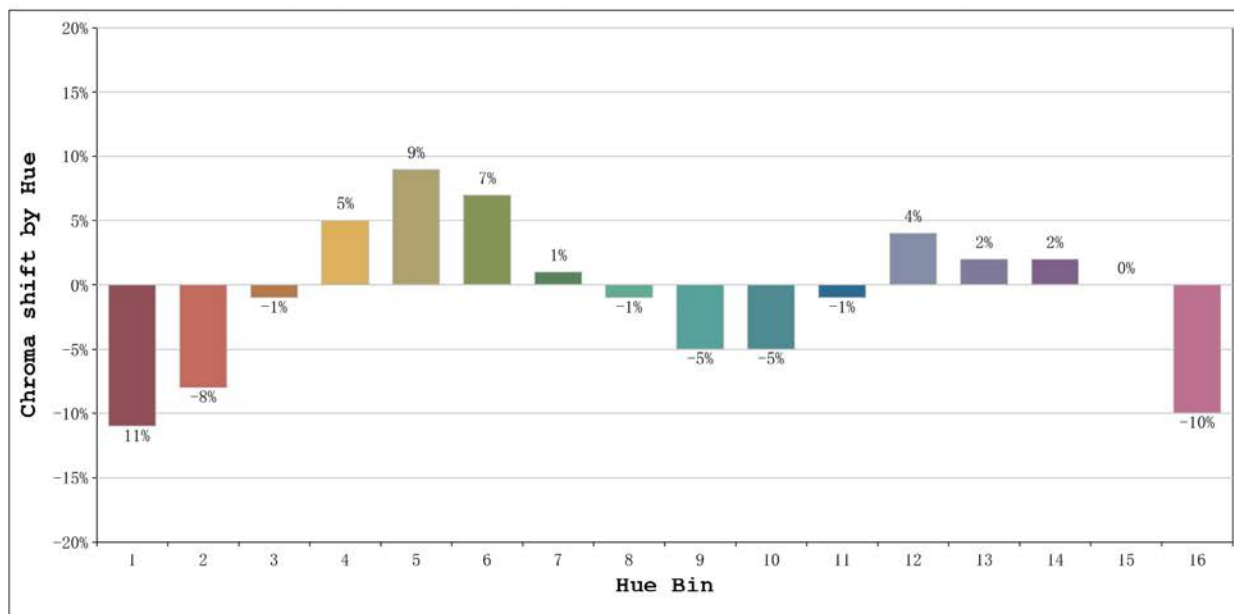
Model:Ecoled Élite 15 ip67
 Tester:Sergio Carneros
 Temperature:27Deg
 Manufacturer:Luz Negra S.L

Number: 31.158
 Date:2024-11-18 08:55:29
 Humidity:40%
 Remarks:tira flexible de 100cm



Model:Ecoled Élite 15 ip67
 Tester:Sergio Carneros
 Temperature:27Deg
 Manufacturer:Luz Negra S.L

Number: 31.158
 Date:2024-11-18 08:55:29
 Humidity:40%
 Remarks:tira flexible de 100cm



			Graphic shift(%)	
Hue Bin	Hue Angle	Rf	Chroma	Hue
1	0.0° - 22.5°	74	-11	0
2	22.5° - 45.0°	78	-8	8
3	45.0° - 67.5°	70	-1	13
4	67.5° - 90.0°	83	5	10
5	90.0° - 112.5°	87	9	5
6	112.5° - 135.0°	88	7	-1
7	135.0° - 157.5°	80	1	-10
8	157.5° - 180.0°	88	-1	-5
9	180.0° - 202.5°	86	-5	-3
10	202.5° - 225.0°	87	-5	3
11	225.0° - 247.5°	85	-1	7
12	247.5° - 270.0°	84	4	4
13	270.0° - 292.5°	86	2	-7
14	292.5° - 315.0°	62	2	-21
15	315.0° - 337.5°	82	0	-12
16	337.5° - 360.0°	72	-10	-12

Model:Ecoled Élite 15 ip67
Tester:Sergio Carneros
Temperature:27Deg
Manufacturer:Luz Negra S.L

Number: 31.158
Date:2024-11-18 08:55:29
Humidity:40%
Remarks:tira flexible de 100cm